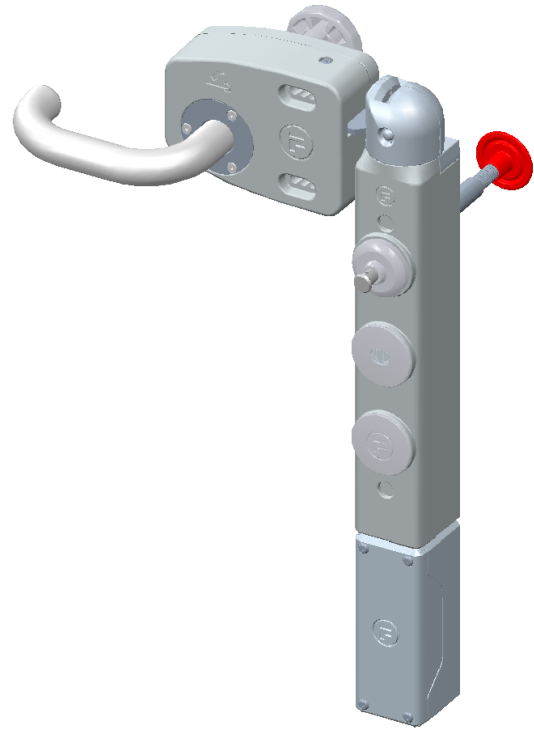
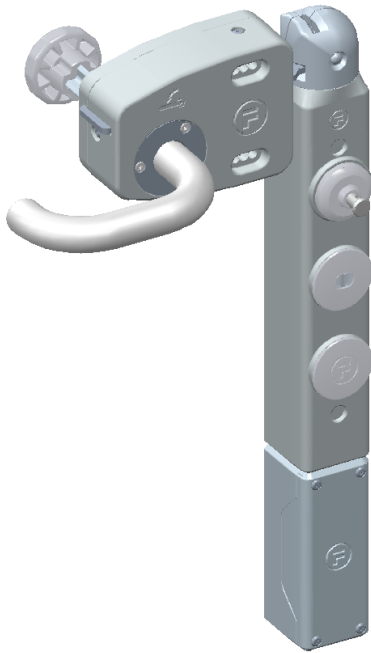


Datasheet for THERXSMEW1



Breakdown List

Item number: ITM-00053240_

Part	Description
THE	Head module including handle actuator
TRX	Standard 60mm Internal Release
TSMEL	Power to Lock - safety on head element only
TW1	12 Terminals - Safety & Control - Self Wire

Datasheet for THERXSMELW1

Technical Specification

tGard offers "a customised safety solution, as standard" and is defined by a range of tGard elements, including selector switches, safety switches(solenoid and non solenoid), personnel keys(safety keys), emergency release, push buttons, estops, indicator lamps and a choice of operating handles for both hinged and sliding guard doors. These elements are simply selected and then assembled into a robust housing, suitable for mounting onto machine guarding, providing the user with an exact configuration specific to the application.

tGard is quick and easy to install and can be mounted directly onto a flat surface, doors or extruded aluminium profiles without the need for mounting plates or brackets. It is IP65 as standard and has been designed to be fully compliant with the new machinery safety standards.

Technical Specification

Housing Materials	THE	Painted die cast zinc alloy
	TRX	Painted die cast aluminium
	TSMEL	
	TW1	
Contact Material	TSMEL	Silver
Colour	THE	Dark Grey
	TRX	
	TSMEL	
	TW1	
Ambient Temperature	0°C to 60°C (32°F to 140°F)	
Environment	THE	Indoor
	TRX	
	TSMEL	
	TW1	
Ingress Protection	THE	IP65****
	TRX	
	TSMEL	
	TW1	
Retention Force	THE	2500N
	TSMEL	2500N(locked)
Operating Force	THE	5N to 10N
Mechanical Life	THE	1,000,000 Operations
	TRX	
	TSMEL	
Maximum Frequency of Operations	THE	1 per second
	TSMEL	
Solenoid Rating	TSMEL	350mA max @ 24VDC
Voltage	TW1	24V DC
Safety Switch Type	TSMEL	DC13: Le=0.5A, Ue=24V DC AC15: Le=1A, Ue=24V AC
Monitoring Switches	TSMEL	DC13: Le=0.5A, Ue=24V DC
Min hinged door radius	THE	150mm (using TAH actuator handle)
Electrical Life	TSMEL	1,000,000 Operations
Back Plate	TRX	Stainless Steel will contain factory blemishes
Max current on power supply	TW1	0.75A

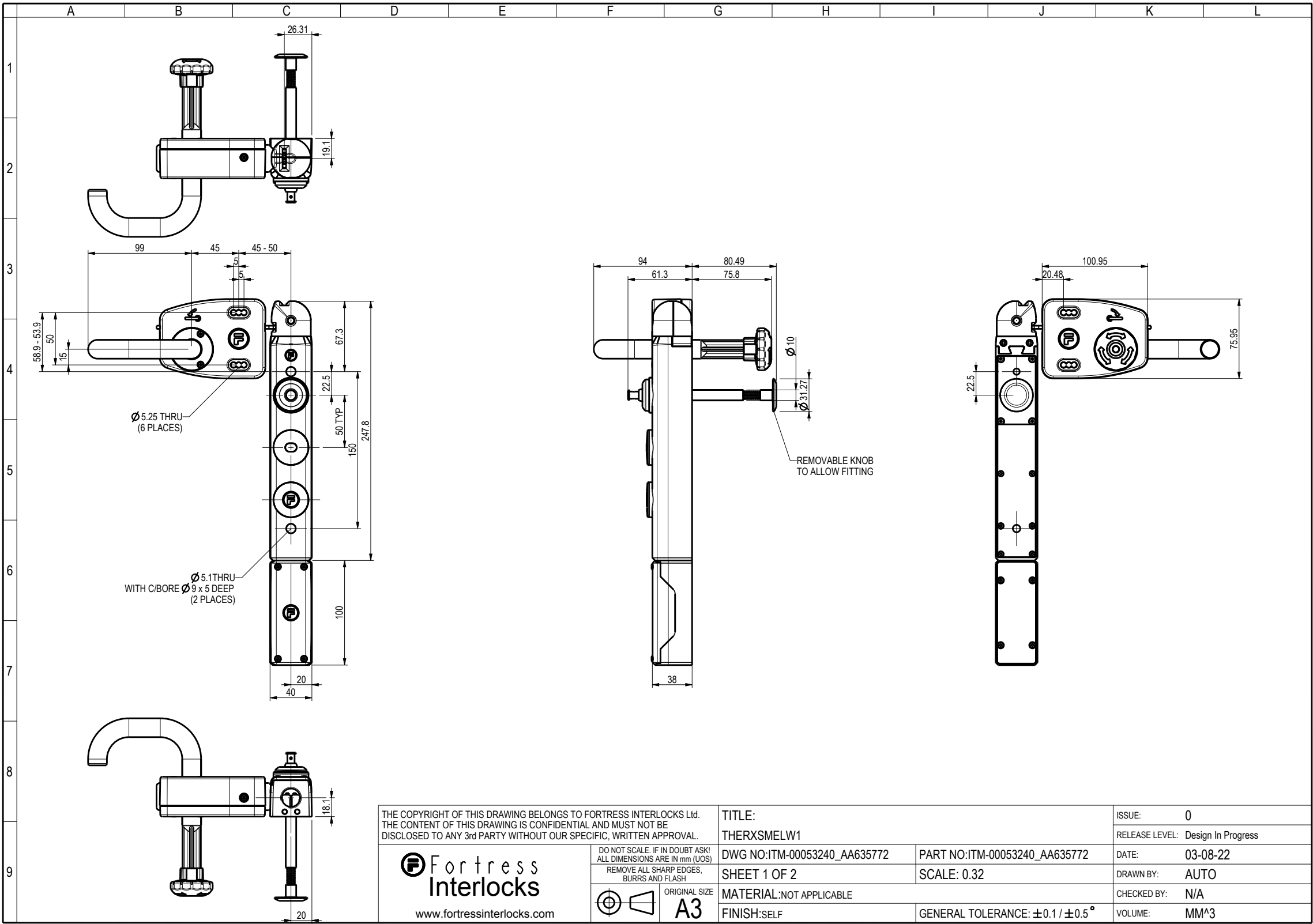
**** IP protection is to the tGard stack that this module attaches to, when correctly fitted according to installation and

Datasheet for THERXSMELW1

maintenance instructions.

Datasheet for THERXSMELW1

Full Dimentional Drawing



Datasheet for THERXSMELW1

	A	B	C	D	E	F	G	H	I	J	K	L
1												
2												
3												
4												
5												
6												
7												
8												
9												

Item

THERXSMELW1

HEAD	1	2	3	4	5	6	7	8	9	10	Base
THE	RX	SM	EL								W1

	Input	Output	2nd Output	SC1 in	SC2 in	SC1 out	SC2 out	SC3 in	SC4 in	SC3 out	SC4 out	+24V	0V	Earth
TRX	-	-	-	-	-	-	-	-	-	-	-	-	-	-
TSM	-	9	-	3	4	5	6	-	-	-	-	-	-	-
TEL	7	8	-	-	-	-	-	-	-	-	-	-	-	-
	-	-	-	-	-	-	-	-	-	-	-	-	-	-
	-	-	-	-	-	-	-	-	-	-	-	-	-	-
	-	-	-	-	-	-	-	-	-	-	-	-	-	-
	-	-	-	-	-	-	-	-	-	-	-	-	-	-
	-	-	-	-	-	-	-	-	-	-	-	-	-	-
	-	-	-	-	-	-	-	-	-	-	-	-	-	-
TW1														

Note: 2nd Output = Anti Clock turn on 3 Pos. Switch

Note: ***** denotes safety element is wired in series to other safety elements

THE COPYRIGHT OF THIS DRAWING BELONGS TO FORTRESS INTERLOCKS Ltd.

THE CONTENT OF THIS DRAWING IS CONFIDENTIAL AND MUST NOT BE DISCLOSED TO ANY 3rd PARTY WITHOUT OUR SPECIFIC, WRITTEN APPROVAL.

F

Fortress Interlocks

www.fortressinterlocks.com

DO NOT SCALE. IF IN DOUBT ASK!

ALL DIMENSIONS ARE IN mm (UOS)

REMOVE ALL SHARP EDGES, BURRS AND FLASH

ORIGINAL SIZE

A3

TITLE:

WIRING TABLE FOR THERXSMELW1

DWG NO:ITM-00053240_AA635772

PART NO:ITM-00053240_AA635772

SHEET 2 OF 2

SCALE: 0.32

MATERIAL:NOT APPLICABLE

FINISH:SELF

GENERAL TOLERANCE: ±0.1 / ±0.5 °

ISSUE:

0

RELEASE LEVEL:

Design In Progress

DATE:

03-08-22

DRAWN BY:

AUTO

CHECKED BY:

N/A

VOLUME:

0.000 MM^3